

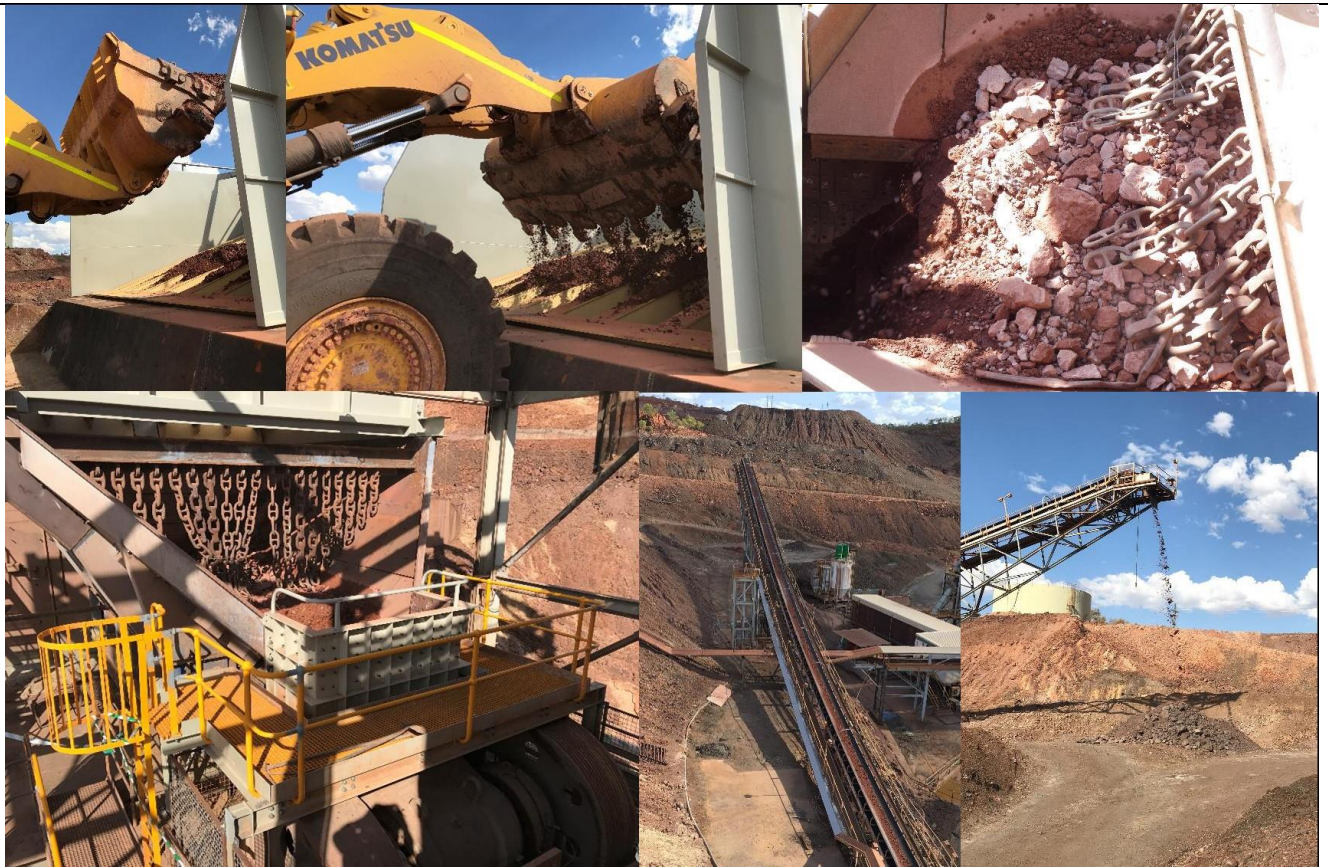


Crushing Circuit Operational MILESTONE Achievement

Milestone Title	Crushing Circuit Operational
Milestone Date	26 th October 2017

Milestone Description

The newly refurbished Crushing Circuit has been successfully commissioned. The Crushing Circuit is now operational and being fed run-of-mine (ROM) material by the Byrnecut WA600 front end loader. The crusher is used to reduce the size of the mined rock from plus 800mm to a product size of 150mm. The product material is conveyed to a 20,000 tonnes coarse-ore-stockpile equal to 5 days milling capacity.



Acknowledgements

Project and Maintenance Refurbishment Teams

For further information please contact

Name	D Wolfenden	Position	Processing Manager	Ph:	4748 9940
-------------	-------------	-----------------	--------------------	------------	-----------